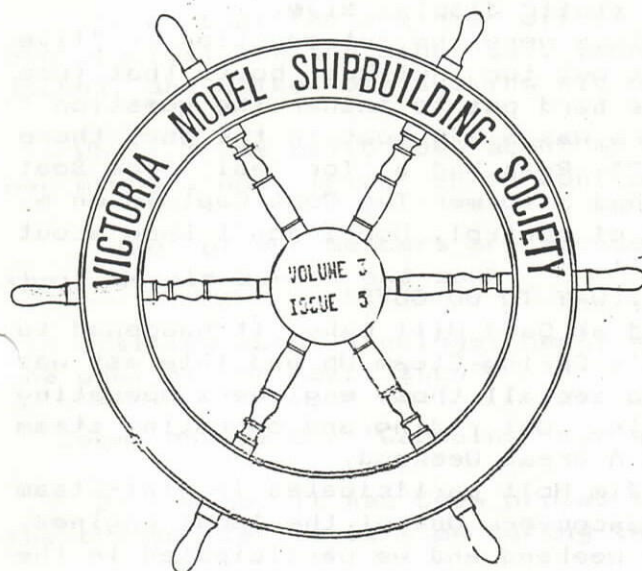


"THE BINNACLE"

MAY-JUNE 1986



VICTORIA MODEL SHIPBUILDING SOCIETY 1986 EXECUTIVE

President....Ron Armstrong
Secretary....Dick Bryant
Librarian....Fred Haire
Director.....Jim Holt
Director.....Geoff Walton

Vice President....Harry Crosby
Treasurer.....Russ Hayden
Editor.....Ken Peterson
Director.....Gordon Fortner
Director.....Rob Woodward

CALENDAR OF EVENTS JUNE/JULY 1986

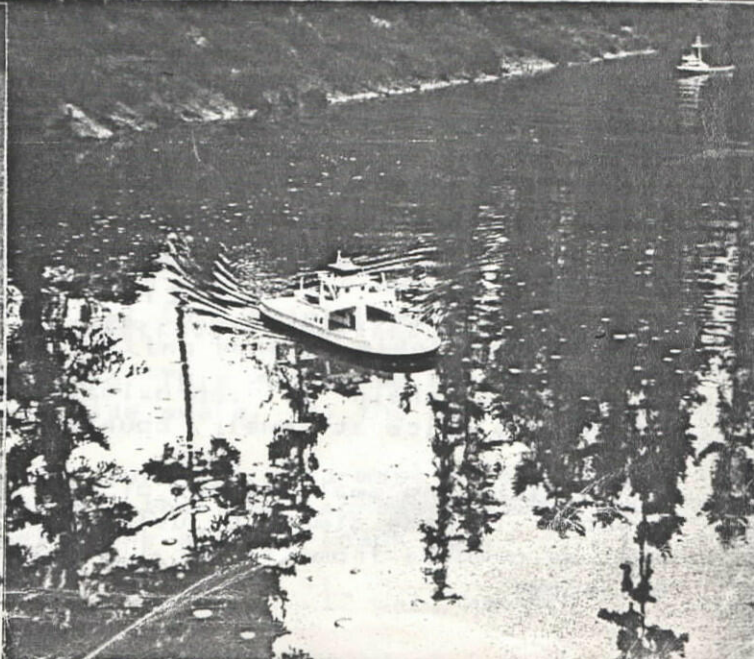
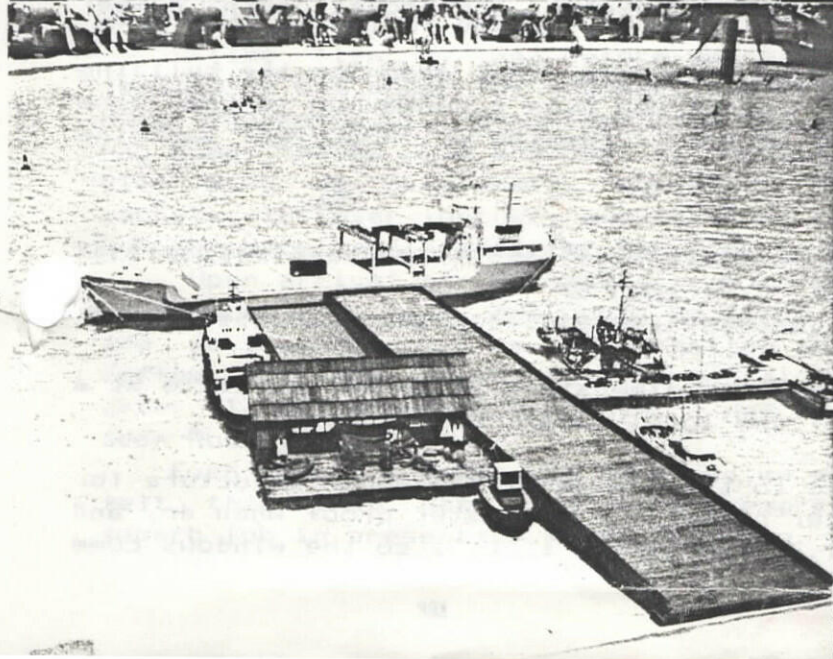
.....This list includes the Model Engineers and Artifacts Society events.....

June 21-22 C.H.A.O. SUMMER FAIR DAYS - ARTIFACTS SITE

June 29 V.M.S.S. EXPO SHOW Vancouver B.C.

July 19-20 V.I.M.E.-C.H.A.O. RUN DAYS - ARTIFACTS SITE

July 27 V.M.S.S. EXPO SHOW Vancouver B.C.



EDITORIAL COMMENT

' Well the hobby show has come and gone. Our layout was the same this year as it has been previously, but many of the models on display were different than before. The display went over very well and at any time that we had boats actually working in the water, we drew crowds to the pool-side. But there was a constant interchange of people gazing at our static display side.

Some of the real interest stirring displays were the introduction of "live steam" models, Ka-Jee boat works brought out two 'Put-Put' boats that free sailed around the pool. And all of us were hard put to answer the question "How does it work?". Of course whenever there was a R/C boat in the pool there were "youngsters" asking "Can I try that?". Russ had a 'for real' Boom Boat Operator on the controls for a while and I had a former Tug Boat Captain on my controls. Both men commented on the realism of control. Now I don't know about Russ but that sure put a feather in my hat!!!!

Altogether a very well done display.....WAY TO GO GUYS!

On May 4 the EXPO practice was held at Sand Hill Lake, it happened to coincide with the second day of the VIME's Spring Steam Up and interest was universal. It sure was very encouraging to see all those engineers operating and watching boats and all those captains out riding and operating steam trains. Lets try to do it more often, It Was A Great Weekend.

On the May 24th weekend your editor and Jim Holt participated in Mini-Steam EXPO at the Burnaby Central Railroad in Vancouver. One of the local engines, #17, the John Shaw was loaned to us for the weekend and we participated in the show along with 27 other engines from all over the west coast as well as several 'down easters'. We had people who came from as far away as Japan, Australia, England and France in attendance, not to mention lots of 'Canucks And Yanks'. Jim and I held down the fort (even sleeping in the Station) for three days, Boy did we ever come home tired, Jim had the audacity to say that I snored. A bald untruth my friend, I don't snore, I saw logs with a steam powered drag saw.

On May 25th our guys put on our first show at EXPO, A report from Harry can be found further on in this newsletter.

An up-coming event that I would like to endorse fully is the Summer Fair at the artifacts property...This is the Major Fund Raising Event for the Artifacts Society for the year...A charge is made at the gate and everything is in operation...The railroad, the sawmill, the planer mill, the blacksmith shop, all the steam engines we can find, The little gassers, the tractors, etc, etc, and I think that since we get such great support from them that we should help out. We have a group of showmen who are used to the public, and a group of boats that look beautiful...lets go out and show off!

A great start on the year fellows, lets keep up the good work.

Ken

THE STEAM CHEST

Over the last several months I have been reading a series of articles in the hobby magazine "MODELTEC" about the paddle steamer "OMAR" by Robert W. Maynard. The series gives step by step construction details to build a paddle-wheeled tow boat as was used in the USA for moving coal barges. The drawings are all very clear and the explanations are quite straight forward, so if you are contemplating building any kind of paddle steamer with radio control I would heartily recommend reading the series.

Bob Maynard includes several tid-bits of extremely useful information from the prototype boats which are extremely helpful in designing your own vessel. For example in one issue he describes how to use the bore and stroke of the engine to design the full paddle wheel to match that engine. This includes wheel diameter, wheel width, shaft diameter, flange diameter, arm pocket depth, number of buckets, pitman size and length, etc.

It is a real pleasure to find a series of articles that describe the building of a model as well as these articles do. If you have a hankering to know more about paddle steamer construction the series is running in "MODELTEC" magazine and started in the November 1985 issue.

Ken

SHIPYARD SHORTS

Small chain of approximately scale dimensions is often available at a reasonable price at jewelry counters of the local department stores.

Fastening small pieces of acrylic to the inside of the super structure for windows is made simple by using "rubber cement". It is water proof when dry and can be removed from the acrylic easily while still 'tacky', so the windows come out clear.

KRP

BILGEWATER

Rumour has it that one of our Captains has become an Engineer, complete with a locomotive.

Seems that the engineer off of the Brentwood Bay Ferry gave Harry's Ferry a prototypical run the other day. Bounced it off three of the four dolphins when he docked, and walked off shaking his head and muttering "Just like the real ones."

While I was quite open about my Pink Smoke episode, there seems to be one of our members who 'fries' speed controls and does his best to keep it a secret.

Two of our members are accused of standing by laughing heartily as one of their models burned and sank.

Talking about sinkings, Kent, what was that strange object in the bottom of the pool at the hobby show?

Seems one of our 'Captains' can get "Lost" on the ferry.

By the way it has been proved that a transmitters batteries will be dead if the transmitter is left on during the trip to EXPO

One of the guys at Expo says we build our models too well, it rained and the capillary action held the containers on Harry's freighter down so tight he couldn't lift them off of the deck.

KP

FIRST EXPO EXCURSION REPORT MAY 25/86

OR HOW THE UMSS PACKED 16 HOURS OF FUN INTO 21 HOURS (and survived)

The day began at 5:10 A.M. - the alarm clock sounded, like a fire bell. Up and dressed, showered and shaved (only needed 2 band-aids) and off to meet the guys at 5:30. They all showed up and we were off. 6:00 arrived at the ferry terminal and met with the whole crew (Harry Crosby, Russ Hayden, Gordon and Sheila Fortner, Ron Armstrong, Joe Gibbons, Tom Gardner, Kent Miller, Tor Engqvist, Rick Chillibeck, Fred Haire, John Van Haaff, John Dough, and Jack Lanfesty). No problem with traffic, we didn't have to use our assured loading tickets. First stop... COFFEE....(doesn't open Til 6:30).----- (editors note; 'Harry I can't print that, this is a "family" newsletter)----- Oh well ... we wait. We did get our coffee and in a few minutes we were on board the ferry and heading for Vancouver. While on board we enjoyed a good round of kibitzing that helped to pass the time. 8:30 off the ferry and on the way to EXPO. 9:15 we arrived at the gate to find that the passes were not there yet. They arrived soon. In we went and proceeded to unload all the necessary equipment to ensure a good day, (you name it, we had it). We even remembered some boats, and I remembered my transmitters (all of them). Well Done!!

By 10 a.m. we had boats in the water and sailing. The area around the wharf was roped off and we had lots of room to operate. The sculpture? and the fins in the water cut down on the operating room but 5-6 boats had enough room to operate at the same time. We tried to stick to a schedule but found that we did things more or less as we felt like it. Never less than 4 boats at a time though. The storage container provided welcome relief to change batteries as they did run down fairly rapidly, we adjusted the show to fit the boats that were ready. Rhonda Legge (our contact at EXPO) seemed pleased with our turnout, show and variety of boats.

Time flew by and before we realized it was 5:00 P.M. and Russ (who was feeling a bit under the weather) packed up his group, bid adieu and headed for home (Thanks Guys). Again time flew and at 7:00 Gordon and his group made thier way home (thanks Guys and Sheila). Myself, Fred, Ron, John, Jon, and Joe sailed till 8:00 as origionally agreed, then packed; boats, tool boxes, caps, jackets, leftover lunches, and assorted goodies into a station wagon (some hung out the back) and headed for the 9 or 10 P.M. ferry sailing.

Upon arrival at Tsawwassen - we were informed that there was no 10:00 P.M. sailing....The next one would be 11:45 P.M. At this point Hysteria took over and we laughed until we had forgotten about getting home by midnight. We drank coffee and ate donuts to keep ourselves awake. This worked so well that even after I got home at 2:30 A.M. I was still wide awake. (by the way has anyone seen Ron ?)

Even though the day was long and we were around the pond most of the day, I felt that this was a worthwhile exercise and the VMSS representatives did a superb job in presenting model shipping. Well done all and thank you.

ANNOUNCEMENTS

The Highway Department has made us a gift of 500 sand bags, Don Mann has made us a gift of another 200, Caanich Municipality has added 500 and Oak Bay has donated another 50. Go along with those already promised to us by the Army we will be able to do a lot of work on our lake shore.

kfp

THE CLUB LIBRARY

No.	Book Title	Author	No.	Book Title	Author
01-1	Secret of Ships in Bottles	Peter Thorne	06-1	Power Boat Modelling	David Thome
01-2	Ships in Bottles	J.P. Lauder and R.W. Biggs	06-2	Ship Modelling Hints & Tips	J.H. Craine
02-1	Sailing Ships	Simon Gooderough	06-3	Techniques of Ship Modelling	Wingrove Gerold A.
02-2	The Baltimore Clipper	H.I. Chapelle	06-4	Yacht Designing & Planning	H.W. Chapelle
02-3	Plank on Frame Models Vol. 1	H.A. Underhill	06-5	The World of Model Ships	Vic Sneed
02-4	Plank on Frame Models Vol. 2	H.A. Underhill	06-6	Build a Boat	Popular Mech
02-5	Masting & Rigging the Clipper Ship & Ocean Carrier	H.A. Underhill	08-1	Nautical Research Journal	March 81
02-6	Mayflower	Noel C.L. Hackney	08-2	" " "	March 82
02-7	The Ship Model Builders Assistant	Charles G. Davis	08-3	" " "	June 82
02-8	Ships and Ship Models	Percival Marshall	08-4	" " "	September 82
02-9	The Built-Up Ship Model	C.G. Davis	08-5	" " "	December 82
02-10	Seventeenth Century Rigging	R.C. Anderson	08-6	Wooden Boat	March/April 85
02-11	Modelling the Revenge	C.N. Millward	08-7	Scale Ship Modeller	January 85
02-12	Model Ships from the Port of New York		08-8	Scale Model Warships	Spring 85
02-13	Lusci's Ship Model Builders Handbook	Vincenzo Lusci	08-9	Harbour and Shipping	June 81
02-14	How to Make Old Time Ships	E.W. Hobbs	08-10	" " "	August 81
02-15	The Galley & The Galleon	E. Armitage McCann	08-11	" " "	September 81

02-16	Modelling the Golden Hinde	Model Shipwright	08-12	"	"	"	November 81
02-17	Period Ship Modelling	R.K. Battson	08-13	"	"	"	January 82
03-1	Model Boilers & Boiler Making	K.N. Harris	08-14	"	"	"	February 82
03-2	Model Stationary & Marine Steam Engines	K.N. Harris	08-15	"	"	"	February 83
03-3	Boat Modelling	V.E. Sneed	08-16	"	"	"	May 83
03-4	Power Driven Ship Models	A.D. Trollope	08-17	"	"	"	June 83
03-5	Pacific Tugboats		08-18	"	"	"	
04-1	Aircraft Carriers	Antony Preston	08-19	"	"	"	September 83
04-2	Battleships	Antony Preston	08-20	"	"	"	October 83
04-3	Warships	Norman Polmar & Norman Friedman	08-21	"	"	"	November 83
05-1	Reed's Seamanship	C.M. Swanston	08-22	"	"	"	December 83
05-2	Young Sea Officers Sheet Anchor	Darcy Lever	08-23	"	"	"	January 84
			08-24	"	"	"	July 83
			08-25	Fine Scale Modeller			March/April 86