

The Binnacle

MAY 1995



**Next Meeting June 8th, 1995 - 7:30 p.m.
Royal Oak Scout Hall**

**VICTORIA MODEL SHIPBUILDING SOCIETY
BOX 45083 MAYFAIR POSTAL OUTLET
VICTORIA, B.C.
V8Z 7G9**

Executive Committee 1995

PRESIDENT	BILL HUCKIN	652-5264
VICE. PRES.	RON ARMSTRONG	391-0101
SECRETARY	JACK PLUMMER	592-2021
TREASURER	DON McCLEOD	478-5380

DIRECTORS

LIBRARIAN	DOUG DYER	658-5645
NEWSLETTER	GIL TEMPLEMAN	474-1452
ENTERTAINMENT	BILL BIRCH	592-6456
	DOUG ATKINS	595-8979
	ROB WOODWORD	474-5912

UPCOMING EVENTS

June 8th, 1995.
Ben Russi
UK. Power and Sail
Close Competition and static judging

June 10th, 1995. 1:00 p.m. till 5:00 p.m.
PRIVATE GARDEN PARTY and FUND RAISER
V.M.S.S. display by invitation only

July 9th, Saanich Strawberry Festival
Saturday 9:00 a.m. till 5:00 p.m.
Beaver Lake, B.C.
All the strawberries and ice-cream you can eat.

July 13th, 1995.
V.M.S.S. regular meeting at Harrison Pond
7:30 p.m. till your Mom calls you home.

Sept. 9th, and 10th. 1995.
V.M.S.S. Annual regatta
Elk Lake. Victoria, B.C.

The Results are in

From the mini regatta held in the curling rink at the 1995
VICTORIA HOBBY and **ROCK SHOW**.

Steering Course:

First Place

Ray Bethell (he must do this for a living!)

Second Place

Nels Combe

Peoples Choice:

First Place

SEA STAR by Bill Huckin

Second Place

KENT by Ron Wild

Emery Lalond

Is building **THE THERMOPILE** she is 1/4" scale and is 54" at the water line. He is having a little problem hand tying the knots and the rigging and requires a hand, let me put it another way, He who shakes the **least** and yet has the **most** free time, please give Emery a call.

Ph.592-0152

Gil T.

Page 3

JOHN'S 'VALKYRIE' AND ALL THAT

At the April meeting John Issac brought his Schnellboot "VALKYRIE" to illustrate some of the things that one can do with the circuits that were discussed at that meeting.

For those who want to have a little more detail, on what was actually contained in that mass of wires and circuit boards, the following will hopefully provide some answers.

Figure 1 is a block diagram of all the Lighting Units contained in the boat. First, I will describe the function of each block. Later detailed circuit diagrams of each block will be shown.

In some cases blocks have identical components. In that case only a description of a typical

block will be given.

All units are fed from a common 6v battery through a connector block.

The arrows labeled E1 to E6 are connected to the 12 Channel Expander. The Expander grounds these points when the appropriate key is pressed on the Transmitter Keypad. So, instead of switching the positive lead of these units, as one would normally expect, these circuits are switched at the negative lead.

It should be noted that all lights are operated at reduced voltage to prolong their life.

Masthead Lights - The masthead lights are made up of 4 red LED's

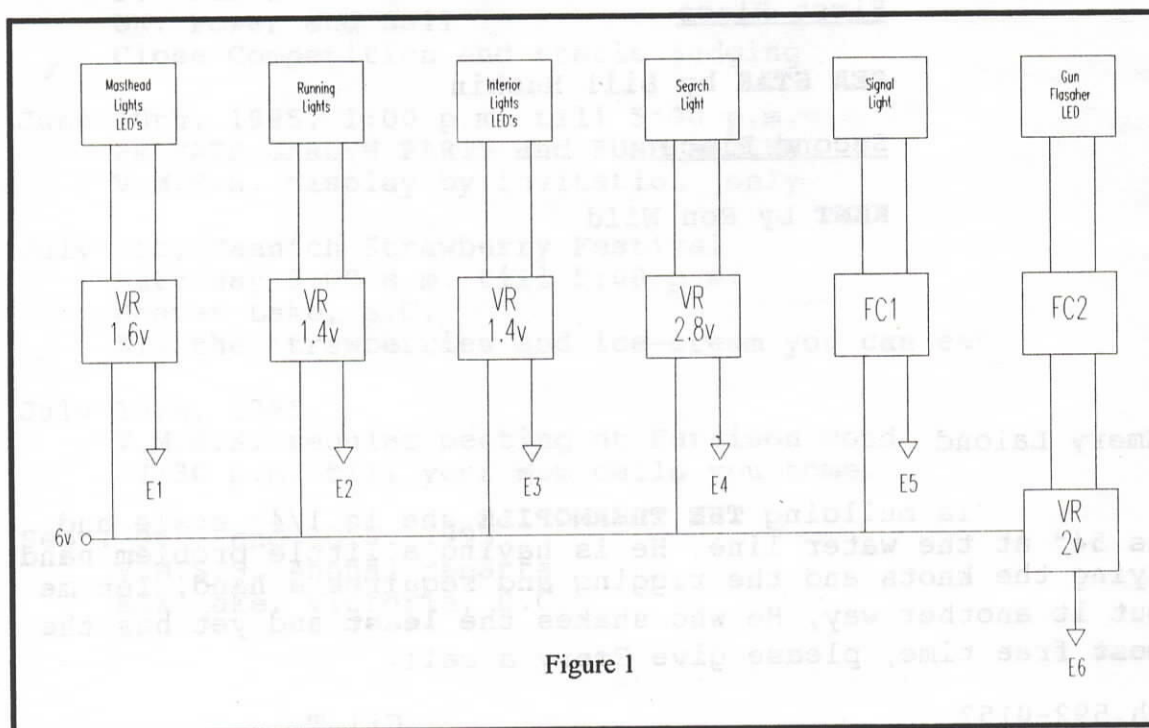


Figure 1

which are fed from a 1.6v Voltage Regulator.

Running Lights - These lights are 1.5v grain of wheat lights, with coloured caps, fed from a 1.4v Regulator.

Interior Lights - These are grain of wheat lights fed from a 1.4v Regulator.

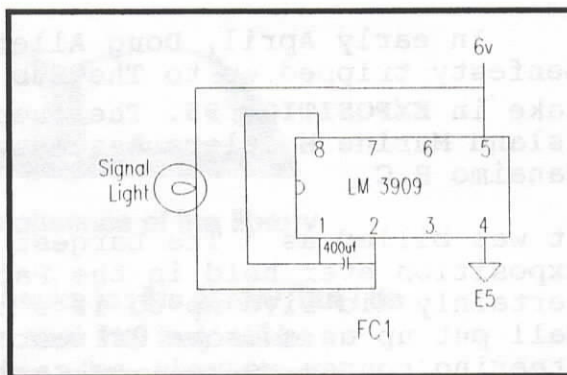
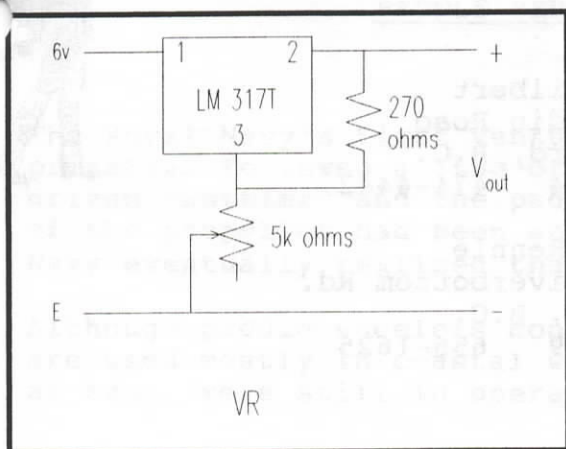
Searchlight - This unit is a High Intensity bulb, called a Mag Light, which runs off a 2.8v Regulator.

Signal Light - This is a 6v bulb which is fed by a Flasher Unit (FC1). The Flasher Unit will be described later.

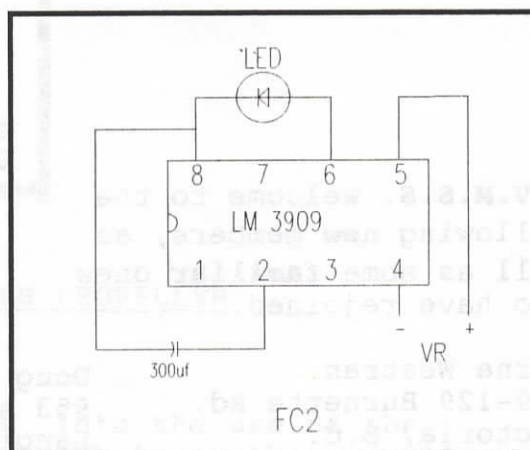
Gun Flasher - These LED's are also fed from a Flasher Unit (FC2) but in this case the Flasher is fed from a 2v Regulator.

Now let's discuss the various units in detail. First of all the Voltage Regulators called VR in the Figure.

All the Voltage Regulators are fed from the 6 volt connector block. The construction of all VR's is the same. All that one does is adjust the 1K Variable Resistor to obtain the required output voltage. The E terminal is connected to the appropriate terminal on the Expander and V_{out} is connected to the associated light(s).



The two Flashing Circuits, although using the same integrated circuit, are slightly different in layout. FC1 is connected directly to the 6 volt source, while FC2 is connected to V_{out} of the 2 volt VR. Pin 4 of FC1 is connected to the Expander.



That's it for this month. Next time I'll discuss the remaining electrical items in John's Boat. This will include the gun rotation circuits and connections for the various sound devices.

The Kolonel

In early April, Doug Allen, John Gough and Jack Lenfesty tripped up to The Hub City on Vancouver Island to take in **EXPOSITION 95**. The event was hosted by Mid-Vancouver Island Marine Modelers Ass. at the Country Club Mall, Nanaimo B.C.

It was billed as " The Largest Static Marine Model Exposition ever held in the Pacific Northwest " Well it certainly did live up to it's press clippings, again the Mall put up an awesome 24 feet square pond suitable for a steering course as well as sailing, no doubt the membership provided the necessary HOT AIR required to power the sails to put on a dazzling performance.

Our fellows did not embarrass us too badly however, returning home with some hardware as well as cash prizes. The boys mentioned that they would like to thank both the Mid-Island Club and The Country Club Mall people for putting on a first rate show and do hope to see a rerun next year.

A **V.M.S.S.** welcome to the following **new** members, as well as some **familiar** ones who have rejoined.

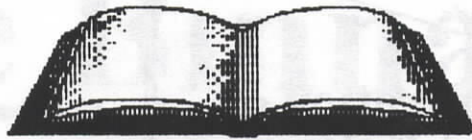
Byrne Westran
309-129 Burnette Rd.
Victoria, B.C.
V9B 4P6 479-1898

Doug Gilbert
953 Ardin Road
Langford, B.C.
V9B 5B4 474-4442

Roland De Schepper
770 Woodcreek Dr.
Sidney, B.C.
V8L 5K4 656-7150

Chris Rennie
4660 Riverbottom Rd.
Duncan, B.C.
V8L 1N9 656-1625





LIBRARY REPORT

I would like to appologize for the absence of the library during the April meeting.

I would like to obtain some new books for the library, but I do not want to purchase books unless I am sure that they will be useful. If members have any suggestions, with regard to books please let me know.

Doug Dyer, Librarian.
May, 1995.



Quality Tool CRIB

WE CARRY A 1000 PIECE TOOL SELECTION
35 TARP SIZES ARE AVAILABLE

HANK
478-4666

725 GOLDSTREAM AVENUE
VICTORIA, B.C. V9B 2X4
FAX: 478-4666

ROLAND
478-4666

PADDLE VERSUS PROPELLER

The Royal Navy's first venture into the use of the propeller followed a 'tug-of-war' between the propeller-driven "Rattler" and the paddle-wheeler "Alecto". The merits of the propeller had been apparent for some time, and the Navy eventually realized that this was the way of the future.

Although paddle-wheelers continue to be built to-day, they are used mostly in coastal waters and shallow rivers. Some, as tugs, were still in operation during World War 2.

Marlin Spike **Page 7**



The New Generation of Model Yacht Fittings.

BEN RUSI

tel: 604 920 8630 fax: 604 380 7784



Bob Rancier
Garnett Rancier

B.C. SHAVER SHOP LTD.

Hobby supplies and shavers

742 Fort St.
Victoria, B.C.
V8W 1H2

383-0051



SIDNEY



HOBBIES & SHAVERS

open Tuesday thru Saturday
10:00 am till 5:30 pm

9788a 2nd st. Sidney

655-3622



TEL: (604) 478-0959

FAX: (604) 642-2084



DIE-CAST

MODELS - Static & Radio Controlled
GAMES, PUZZLES, and MUCH MORE

DOUG NEX
RES: (604) 642-3473

2810-A JACKLIN ROAD
VICTORIA, B.C. V9B 5A4