

# THE BINNACLE

AUGUST 1989.



NEXT MEETING SEPTEMBER 14th 1989 7.30.  
BACK AT THE FLEET CLUB.

Victoria Model Shipbuilding Society  
Box 4114 Postal Station A  
Victoria, BC.  
V8X 3X4

# COMMITTEE 1989.

|                          |                |            |
|--------------------------|----------------|------------|
| President                | Ron Wild.      | 478-5430   |
| Vice President           | Elwood White.  | 1-743-5441 |
| Secretary.               | Ron Hilsden.   | 479-5760   |
| Treasurer.               | Don McLeod.    | 478-5380   |
| Director.(Publicity)     | Ron Armstrong. | 478-1952   |
| Director.(Newsletter)    | Tony House.    | 652-0305   |
| Director.(SHAS Liason)   | Fred Haire.    | 474-3650   |
| Director.(Newsletter)    | Stan Jacobs.   | 479-3989   |
| Director.(Librarian)     | Don McCord.    | 652-0188   |
| Director.(entertainment) | John Marsh.    | 385-5740   |

## UPCOMING ENTERTAINMENT.

September. Jim Greenwood talking about Naval Architecture.  
October Film.  
November. John Gough...Propellers for models.  
December...Dinner and surprise entertainment.  
All events are subject to change.

## UPCOMING EVENTS.

August 13th 1989. Burnaby Regatta. Central Park Burnaby.

September 16th -17th 1989...The 1989 Golden Gate Scale  
Concours. Details elsewhere.

September 30th-October 1st 1989... VIME Fall Meet.

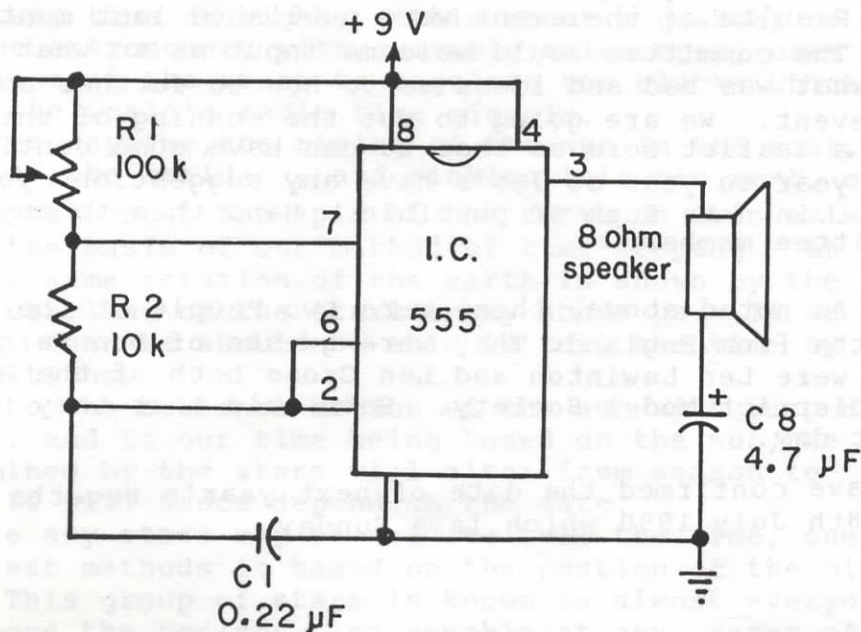
October 15th 1989...World Ship Society Annual Amateur Boat  
and Ship Model Competition. Details elsewhere.

## WANTED.

Arnold Sowards is in need of a second hand servo cheap.  
If you have one to dispose of call Arnold at 383-4801 or see  
him at the meeting.

# FOG and/or BOAT HORN

John Isaac.



## NOTE -

insert 1k potentiometer between C8 and speaker to control volume. (if required).

insert switch between pin 8 and +9 V.

for deepest note, use largest speaker your boat will accomodate.

**DO NOT APPLY MORE THAN 9 Volts TO THIS CIRCUIT.**



## VMSS REGATTA.

Well, despite the fact that we had to hold the Regatta on a Saturday it was well attended with entrants from Vancouver, Burnaby, Anacortes WA, LeDuc Alta, And two guests from England.

Results of the event were published last month.

The committee would welcome input as to what was good and what was bad and ideas as to how to further enhance the event. We are going to put the running of the regatta into a leaflet form so that we can have some continuity from year to year so let's have any suggestions you may have...in note form if possible. Hand them to any committee member.

As noted above, there were two People at the the regatta from England. They were guests of Don Ferguson. They were Len Lewinton and Len Gross both of the Handwell and District Model Society. Both said that they had had a great day.

We have confirmed the date of next year's regatta as being the 8th July 1990 which is a Sunday.

The committee would like to point out that the pond at the Artifacts grounds is for the sailing of boats only. It has been brought to our notice that two members of the club have been swimming in said pond. We would not be so unkind as to tell you who they were but their initials are Stan and Elwood.

## Hints and Tips department.

If you want to drill a hole in a finished surface, Cover the area with a piece of scotch tape first. This will prevent the paint from chipping.

Arnold Sowards.

The following article was submitted by **Kent Miller**

Your watch stopped? Use big dipper clock.

Telling the time by the stars is a fascinating problem. The careful amateur, with no instruments, can estimate the time, at any time of night, within about a quarter of an hour. The astronomer, with suitable telescopes, uses his observations of the stars to regulate the clocks which send out the world's radio time signals.

In the daytime, the rising of the sun in the east, its crossing of the meridian, and sinking into the west, serve as an indication of the spin of the earth on its axis, which is the basis of our method of time-keeping. At night, the same rotation of the earth is shown by the majestic circling of the starlit sky above us. If we know the stars, then we should be able to tell the time by their positions.

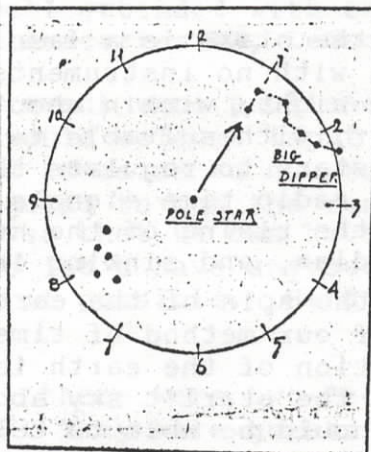
Due to the seasonal motion of the sun with respect to the stars, and to our time being based on the sun, the time as determined by the stars will alter from season to season. It will hence depend on the date.

While any stars may be used to tell the time, one of the simplest methods is based on the position of the big dipper. This group of stars is known to almost everyone, and is above the horizon, and useable at any season of the year.

The method: Regard the northern sky as a clock face, with the north star at the centre, and the pointers of the big dipper as the hour hand. On this star clock estimate the time to the nearest quarter hour. In the accompanying diagram, the time would be about 1.00 hours or 1 am.

To this time, add the number of months and fractions of a month since the new year. Now multiply this sum by two, and subtract the sum from  $52 \frac{1}{4}$ . This will then be the approximate standard time on the 24 hour basis for a place on the standard meridian.

For example, if on April 8 the star clock is as shown in the diagram:



Estimate time.....1 hour

Months since Jan.1.....3 3/4

Sum.....4 1/4

Multiply by two.....8 1/2

Subtract from 52 1/4.....43 3/4

Since this number is more than 24 hours, subtract 24  
from it for the answer:  $43 \frac{3}{4} - 24 = 19 \frac{3}{4}$  hours or  
7.45pm


For Toronto, which is 17.6 minutes west of the  
standard meridian (75th), a quarter of an hour should be  
added; for places east of the standard meridian, the  
longitude correction should be subtracted.


It is very interesting, during the coming months, to  
determine the time at various times of night, and notice  
how well the correction works out, and also to see how  
much the heavens change with the season, and with the  
same time of night.

Kent offers the following correction for Victoria..

Victoria longitude.....123 degrees 25.2 minutes west,  
so for Victoria, add a half hour to the calculation.






**SIDNEY** 

**HOBBIES & SHAVERS**

open Tuesday thru Saturday  
10:00 a.m. till 5:30 p.m. 

9788a 2nd st. Sidney 

655-3622

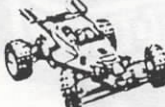



**Royal Oak Hobbies**  
**ROYAL OAK CENTRE**

4454 WEST SAANICH RD., VICTORIA, B.C. V8Z 3E9  
TELEPHONE (604) 479-7814

HOBBIES • CRAFTS • TOYS • STATIONERY

Hours Mon to Sat 9:00 - 5:30 Fri 9:00 - 7:00




Bob Rancier  
Garnett Rancier

**B.C. SHAVER SHOP LTD.**

Hobby supplies and shavers

652 Yates Street  
Victoria, B.C. V8W 1L3 383-0051



Support your local Hobby Store.